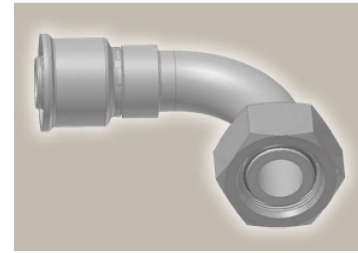
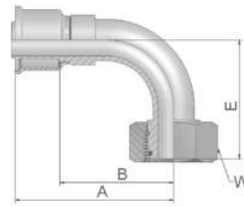


# CF

## Female Metric 24° Light Series with O-Ring Swivel – 90° Elbow

ISO 12151-2-SWE-L – DKOL 90°



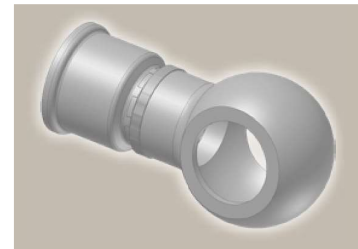
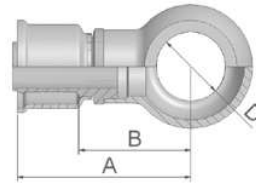
| Part Number | Hose I.D. |      |      | Thread<br>metric | Tube<br>O.D.<br>mm | A<br>mm | B<br>mm | E<br>mm | W<br>mm |
|-------------|-----------|------|------|------------------|--------------------|---------|---------|---------|---------|
|             | Inch      | Size | mm   |                  |                    |         |         |         |         |
| 1CF26-8-4   | 3/16      | -4   | 5.0  | M14x1.5          | 8                  | 45      | 24      | 29      | 17      |
| 1CF26-10-5  | 1/4       | -5   | 6.3  | M16x1.5          | 10                 | 55      | 36      | 30      | 19      |
| 1CF26-10-6  | 5/16      | -6   | 8.0  | M16x1.5          | 10                 | 55      | 34      | 32      | 19      |
| 1CF26-12-6  | 5/16      | -6   | 8.0  | M18x1.5          | 12                 | 56      | 35      | 36      | 22      |
| 1CF26-12-8  | 13/32     | -8   | 10.0 | M18x1.5          | 12                 | 50      | 30      | 32      | 22      |
| 1CF26-15-8  | 13/32     | -8   | 10.0 | M22x1.5          | 15                 | 58      | 38      | 42      | 27      |
| 1CF26-18-10 | 1/2       | -10  | 12.5 | M26x1.5          | 18                 | 57      | 34      | 38      | 32      |
| 1CF26-18-12 | 5/8       | -12  | 16.0 | M26x1.5          | 18                 | 69      | 46      | 45      | 32      |
| 1CF26-22-12 | 5/8       | -12  | 16.0 | M30x2            | 22                 | 78      | 55      | 47      | 36      |
| 1CF26-18-16 | 7/8       | -16  | 22.0 | M26x1.5          | 18                 | 92      | 65      | 70      | 32      |
| 1CF26-28-16 | 7/8       | -16  | 22.0 | M36x2            | 28                 | 96      | 70      | 71      | 41      |
| 1CF26-28-20 | 1 1/8     | -20  | 29.0 | M36x2            | 28                 | 117     | 90      | 81      | 41      |
| 1CF26-35-20 | 1 1/8     | -20  | 29.0 | M45x2            | 35                 | 117     | 90      | 77      | 50      |
| 1CF26-35-24 | 1 3/8     | -24  | 35.0 | M45x2            | 35                 | 117     | 89      | 79      | 50      |

Hose fittings are delivered with ozone resistant Nitrile (NBR) O-ring as a standard version. Working temperature from -40 °C up to +105 °C.  
Hose fittings with special O-rings (Viton or EPDM) available on request. O-ring dimensions and part-numbers see in section Eb.

# 49

## Metric Banjo Straight

DIN 7642



| Part Number | Hose I.D. |      |      | A<br>mm | B<br>mm | D<br>mm |
|-------------|-----------|------|------|---------|---------|---------|
|             | Inch      | Size | mm   |         |         |         |
| 14926-12-6  | 5/16      | -6   | 8.0  | 47      | 26      | 12      |
| 14926-14-6  | 5/16      | -6   | 8.0  | 49      | 28      | 14      |
| 14926-14-8  | 13/32     | -8   | 10.0 | 48      | 28      | 14      |
| 14926-16-8  | 13/32     | -8   | 10.0 | 50      | 30      | 16      |

Approved **fitting series** for hose types:

|    |     |     |     |       |     |     |     |
|----|-----|-----|-----|-------|-----|-----|-----|
| 26 | 201 | 206 | 213 | 221FR | 244 | 285 | 293 |
|----|-----|-----|-----|-------|-----|-----|-----|